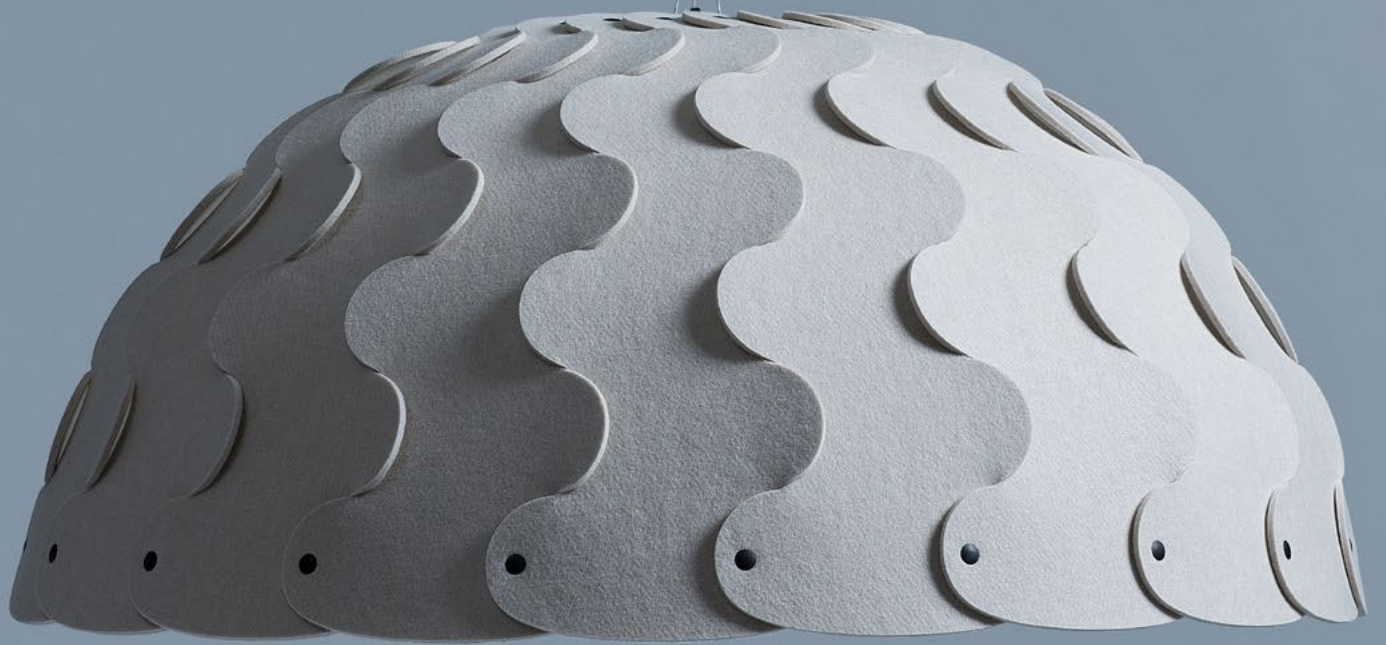


PLN GROUP



HUSH

ACOUSTIC LIGHT COLLECTION

Designed by David Trubridge



Shopify Headquarters, Ottawa, Canada

ABOUT HUSH Hush is a light, an intimate space, and an acoustic device. Hung over a meeting table, task desk or restaurant bar, Hush is ideal for reducing noise and improving the acoustics of a space. It was designed by David Trubridge Design Studio for PLN Group.

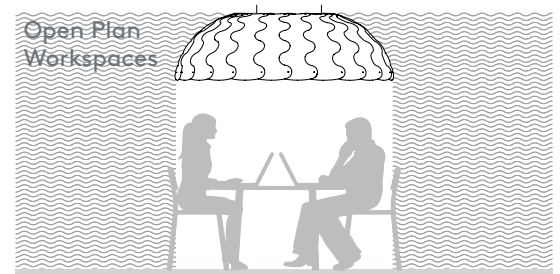
HOW IT WORKS Hard, dense surfaces (glass, concrete, etc.) in modern offices and restaurants often reflect sound and make it appear louder. Hush's lightweight, semi-rigid acoustic panels soften sound and reduce reverberations through the absorption of certain frequencies (mainly mid to higher frequencies), which then leave a room with much more comfortable sound level without eliminating noise completely.

MATERIAL Manufactured from 6mm thick panels of 100% polyester fibers (including 65% post-consumer recycled material) the material is sustainable, safe, non-toxic, nonirritant and non-allergic.

OPTIONS 15 colours. Available with LEDs, E26 cord fixture (bulb) or without lights (hood).

SHIPPING Hush is shipped flatpacked with full instructions for assembly.

APPLICATIONS



HUSH

Designed by David Trubridge

PLN GROUP

MINI



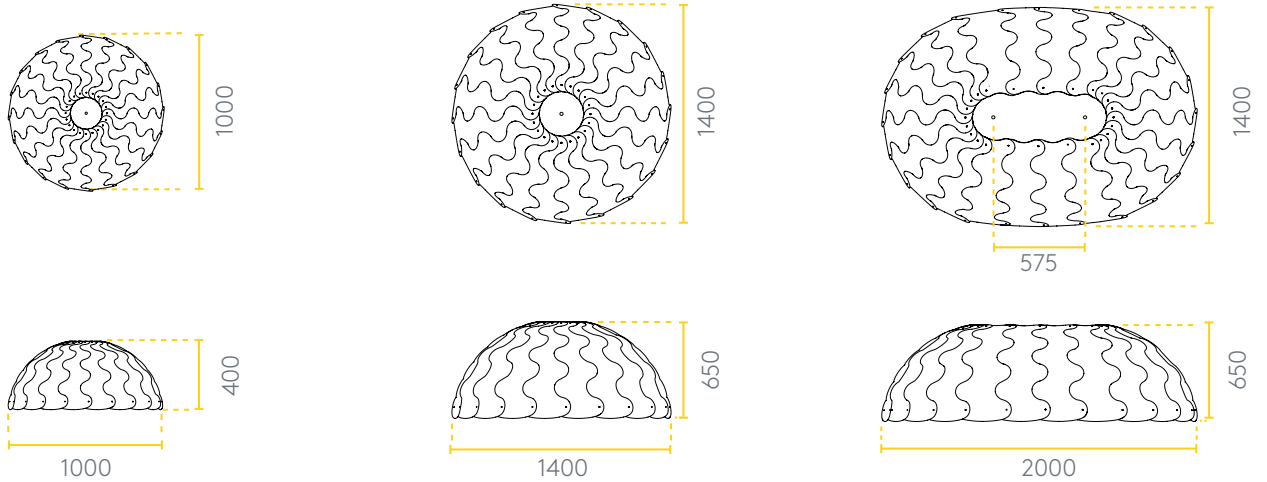
ROUND



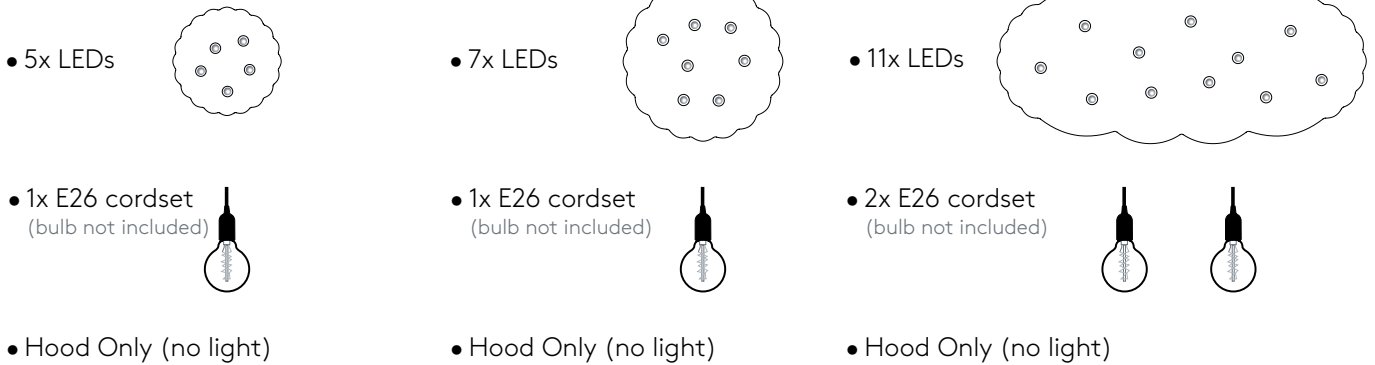
OVAL



DIMENSIONS (MM)



LAMPING OPTIONS



SPECIFICATIONS



Conforms to UL
STD 1598
Certified to CSA
Std C22.2
No. 250.0

- Kitset (Self Assembly Required)
- Installation instructions supplied
- Box dimensions: 1120mm x 510mm x 140mm
- Net weight:
Mini 3 kg
Round 6.5kg
Oval 11.5kg
- Available in 15 colours option (see colour guide)
- Lamping Options:
 - LEDs: Replaceable, energy efficient LEDs (3000 Kelvin, CRI 80-85) and driver:
Mini: 5x LEDs (16.8W, 510 Lumens)
Round: 7x LEDs (16.8W, 714 Lumens)
Oval: 11x LEDs (25.2W, 1122 Lumens)
 - E26/E27 cordset (Mini 1x, Round 1x, Oval 2x)

- Made from 100% polyester, without chemical binders, tested as low VOC
- Manufactured in New Zealand under a certified environmental management system
- Manufactured using a minimum of 65% post-consumer recycled material (pet bottleflake)
- Acoustic performance: See our Acoustic Report for more information
- Safe, non-toxic, non-irritant and non-allergenic
- Supplied with steel cable hanging wire and cone grip attachments and electrical cords
- Suitable for indoor use only

COLOUR SWATCHES

Hush lights are available in 15 colours. These swatches are to be used as a guide only, please refer to a product sample for true color reference.



Pavilion



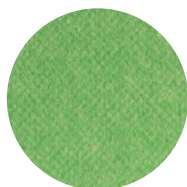
Savoye



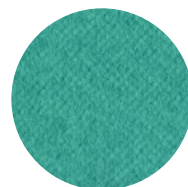
Opera



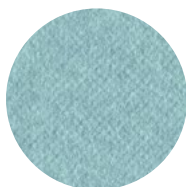
Acros



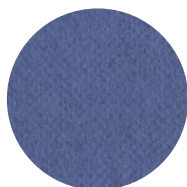
Bosco



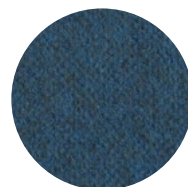
Lotus



Falling Water



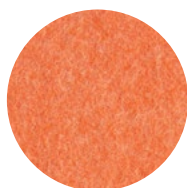
Galaxy



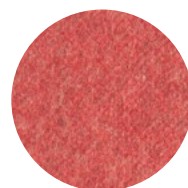
Pinnacle



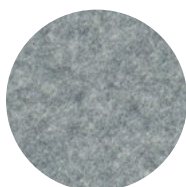
Senado



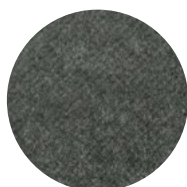
Zenith



Ironbank



Flatiron



Empire



Petronas

ACOUSTIC REPORT

The tests described in this report were conducted on the 27th of August, 2014. The tests were performed at the request of IQ Commercial to determine the equivalent sound absorption area of a sample of Hush Light Round. The tests were carried out following the interrupted noise technique outlined in ISO 354: 2003 Acoustics -- Measurement of sound absorption in a reverberation room. The tests were carried out in the reverberation room of the Department of Mechanical Engineering, University of Canterbury, New Zealand.

Equivalent sound absorption area of the Hush Light Round

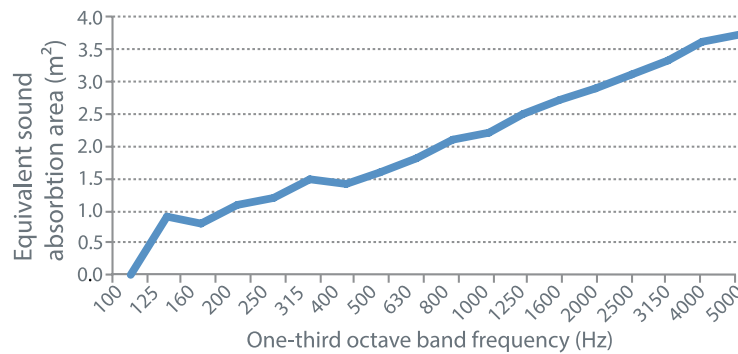


TABLE 1: Test room reverberation times and equivalent absorption area of Hush Round.

1/3 Octave band centre frequency (Hz)	Average RT's for empty room T60 empty (s)	Average RT's for room with sample T60 empty+sample(s)	Equivalent sound absorption area A obj (sq ft)	95% Confidence interval for Aobj
100	6.254	6.382	0.0	0.74
125	6.206	5.377	9.69	0.48
160	7.643	6.516	8.61	0.16
200	8.065	6.503	11.84	0.20
250	8.503	6.601	12.92	0.10
315	9.102	6.580	16.15	0.23
400	8.172	6.173	15.07	0.09
500	7.637	5.643	17.22	0.20
630	6.706	5.037	19.38	0.15
800	6.369	4.617	22.6	0.21
1000	5.999	4.369	23.68	0.14
1250	5.343	3.899	26.91	0.23
1600	4.556	3.398	29.06	0.14
2000	4.243	3.161	31.22	0.16
2500	3.959	2.931	33.37	0.16
3150	3.476	2.625	35.52	0.20
4000	2.959	2.279	38.75	0.13
5000	2.409	1.930	39.83	0.35

Full acoustic test report available on request.

**MATERIAL
DATA SHEET**

Hush is made from .25" thick 100% polyester and manufactured in New Zealand Australia under Autex's ISO 14001 certified Environmental Management System. Containing a minimum of 65% post-consumer recycled material (PET bottle-flake); it is completely safe, non-toxic, non-allergenic and non-irritant.

FIRE RATINGS (CONDUCTED ON 12MM)

ISO 9705: 1993
 Classification: Group 1-S
 Smoke Production Rate: <5.0m²/s
 As required by NZBC C/VM2
 AS ISO 9705 - 2003
 Classification: Group 1
 (SMOGR_{Arc}): <100m²/s
 As required by BCA C1.10
 FI 4974 dated 16th September, 2012
 EN13501-1:2007+A1:2009
 B - s1, d2

VOC EMISSIONS

The polyester has been tested by Cetec Pty Ltd (Report: CV080408) for chemical emission and is classified as low VOC. VOC concentration: 0.01 mg/m³

MOISTURE ABSORPTION

Polyester fibre when exposed to an atmosphere of 122°F at 90% relative humidity for four days showed moisture absorption of less than 0.03% by weight. Polyester is not affected by moisture, mould or mildew and will not rot or deteriorate in intended use situations.

FABRIC CARE

Blot spills from fabric quickly. Wipe with a damp cloth. Avoid rubbing and excessive amounts of water as this will affect the finish. Use carpet or upholstery shampoo as directed. Blot with a clean dry cloth after each application of solution. Custom printed material requires the services of a specialist cleaning company. For more information, please see our full care and maintenance instructions.

PATTERN REPEAT

Non-woven. No pattern repeat but product has directional grain. Product may vary from samples and batch to batch due to fibre blending and lay-up which is an inherent feature of this product.

IMPACT RESISTANCE

The polyester has been tested for impact resistance to EN13964:2004 and meets the criteria of Class 1A; not adversely effected at impact velocities over 16.5m/s.

ENVIRONMENTAL

The manufacturing is under ISO 9001 and ISO 14001 certified Quality and Environmental Management Systems.

Contains a minimum of 65% previously recycled polyester fibre (from PET bottleflake) ensuring comparatively low embodied energy. Off-cuts and manufacturing waste is re-used or recycled wherever possible. Uncontaminated material can be recycled.

Manufactured from 100% polyester fibres and does not contain formaldehyde binders and will not become a potential airborne pollutant.

HUSH

Designed by David Trubridge

PLN GROUP

Auckland, New Zealand



New York City



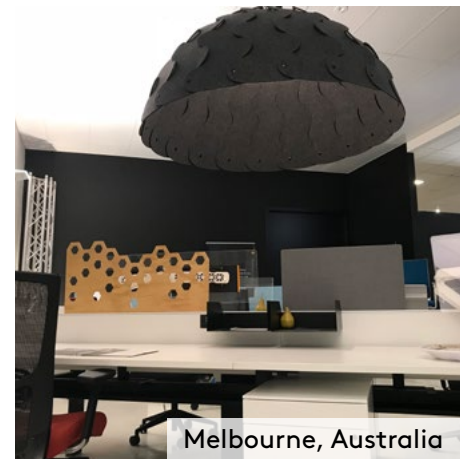
Hong Kong



Toronto, Canada



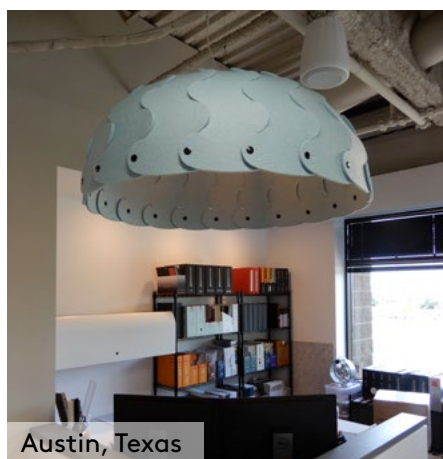
Auckland, New Zealand



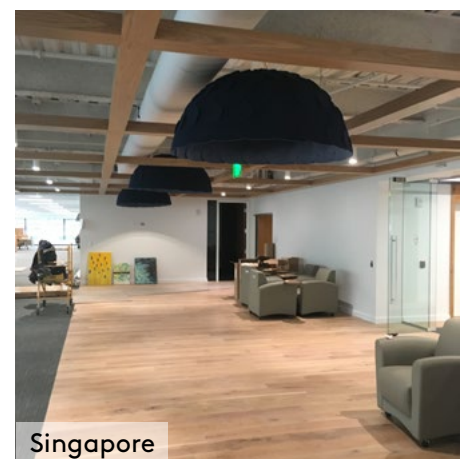
Melbourne, Australia



Auckland, New Zealand



Austin, Texas



Singapore