

Redefine your environment with Quiespace® Lattice; a premium range of suspended acoustic absorbing baffles constructed from Autex Cube™. Artistically designed with functionality in mind; Lattice is ideal for reducing reverberated noise and controlling the echo of background chatter.

Constructed from Autex Cube™; Lattice is made from 100% polyester and manufactured in New Zealand under Autex's ISO 14001 accredited Environmental Management System. Containing a minimum of 65% post-consumer recycled material, Quiespace® Lattice is the obvious choice for sustainable acoustic control.

Quiespace® Lattice is a non-toxic, non-allergenic and a non-irritable product making it ideal for environments where health and safety is key including hospitality, offices and the education sector.

### Key Benefits

- Premium sound absorption and balanced acoustic performance
- Highly durable providing long term stability and performance
- Light weight and easy to install
- Available in a range of colours and designs
- Made in New Zealand
- Manufactured using a minimum of 65% post-consumer recycled material
- Made from 100% polyester fibres without chemical binders and certified low VOC
- Safe, non-toxic, non-allergenic and non-irritable
- Manufactured under ISO 9001 and ISO 14001 Quality and Environmental Management Systems
- Does not contain any Red List chemicals \*

### Applications

- Decorative and functional acoustic absorption system for office, education, retail, hospitality and commercial interiors
- Minimise noise in the interior environment and create a unique aesthetic

### Specification:

Suspended acoustic absorption system shall be **Quiespace® Lattice Eclipse** from thermally bonded polyester containing not less than 65% post-consumer recycled material as manufactured by Autex [www.autexindustries.com](http://www.autexindustries.com)

Suspended acoustic absorber 1197 x 2346 x 337mm (nom. depth), colour [ ], sound absorption Class A, NRC 1.00 – if direct fixed to ceiling: Class A, NRC 1.00. Fire rating ISO 9705: Classification: Group 1-S, AS ISO 9705 – 2003 Classification: Group 1, EN13501-1:2007+A1:2009: B - s2, d2

Lattice to be supplied unassembled with 4 x 1m stainless braided wire, 4 x axis ceiling connectors, 8 x wire crimps, 4 x alloy tube inserts. Install as per Autex Quiespace® Lattice Eclipse Install Instructions.

### Design Options

Quiespace® Lattice is also available in the following designs: Lattice Eclipse and Lattice Torus.

Ask your Autex Account Manager for more information on the current Lattice design options.

### Colour Options



SAVOYE



OPERA



ACROS



FALLING WATER



PINNACLE



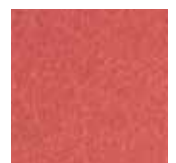
SENADO



BOSCO



ZENITH



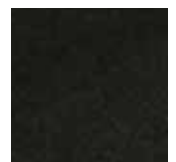
IRONBANK



FLATIRON



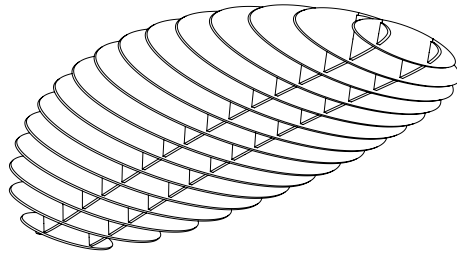
EMPIRE



PETRONAS

\* Green Building Rating Compatibility certificate can be found on [www.envirospec.co.nz](http://www.envirospec.co.nz) or from your Autex Account Manager

## Product Specifications



Product Name	Quietspace® Lattice
Style	Eclipse
Composition	100% Polyester Fibre (PET)
Width	1197mm at widest point
Length	2346mm at longest point
Height	337mm at highest point
Pack Contents:	1 x Quietspace® Lattice

### Installation Fittings

All components for assembly and standard installation supplied, see Install Instructions for details.

### Fastness to Light

Quietspace® Lattice is suitable for indoor use only.

## Acoustic Performance

Quietspace® Lattice is specifically designed to reduce and control reverberated (echo) noise in building interiors.

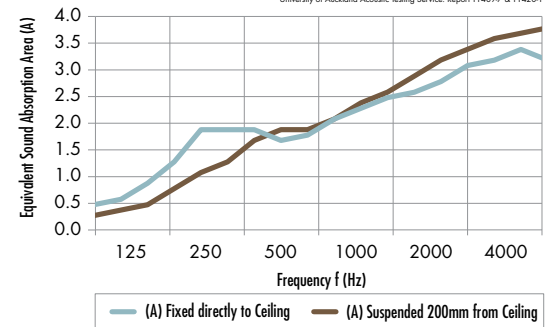
### Noise Reduction Coefficient (NRC)

Direct Fix to Ceiling	1.00
Suspended 200mm from Ceiling	1.00

### Effective Absorption Area Per Unit (m<sup>2</sup> Sabine)

In accordance with ISO 354

Quietspace® Lattice Eclipse  
Acoustic Testing to ASTM C423/99  
University of Auckland Acoustic Testing Service, Report T1409/7 & T1420/1



Frequency (Hz)	125	250	500	1000	2000	4000
Direct Fix to Ceiling	0.6	1.6	1.7	2.2	2.7	3.2
200mm from Ceiling	0.3	1.0	1.7	2.3	3.0	3.6

### Fire Ratings (Conducted on 12mm Cube™)

#### ISO 9705: 1993

Classification: Group 1-S  
Smoke Production Rate: <5.0m<sup>2</sup>/s  
As required by NZBC C/VM2

#### AS ISO 9705 - 2003

Classification: Group 1  
(SMOGR<sub>ARC</sub>): <100m<sup>2</sup>/s<sup>2</sup>  
As required by BCA C1.10  
Fl 4974 dated 16th September, 2012

#### EN13501-1:2007+A1:2009

B - s2, d2  
WF 336911 dated 25th February, 2014

### VOC Emissions

Autex polyester has been tested by Cetec Pty Ltd (Report: CV080408) for chemical emission and is classified as low VOC.  
VOC concentration: 0.01 mg/m<sup>3</sup>.

### Pattern Repeat

Non-woven. No pattern repeat but product has directional grain. Product may vary from samples and batch to batch due to fibre blending and lay-up which is an inherent feature of this product.

### Fabric Care

Blot spills from fabric quickly. Wipe with a damp cloth. Avoid rubbing and excessive amounts of water as this will affect the. Use carpet or upholstery shampoo as directed. Blot with a clean dry cloth after each application of solution.

### Moisture Absorption

Polyester fibre when exposed to an atmosphere of 50°C at 90% relative humidity for four days showed moisture absorption of less than 0.03% by weight. Polyester is not affected by moisture, mould or mildew and will not rot or deteriorate in intended use situations.

### Environmental

Autex is committed to best practice through our ISO 9001 and ISO 14001 accredited Quality and Environmental Management Systems.

Cube™ products contains a minimum of 65% previously recycled polyester fibre (PET bottle-flake) ensuring comparatively low embodied energy. Off-cuts and manufacturing waste is re-used or recycled wherever possible.

Cube™ is manufactured from 100% polyester fibres and does not contain formaldehyde binders. Autex polyester fibres support safer indoor air quality and will not become a potential airborne pollutant.

### Service

For further information about Cube™ or any other Autex product, please contact your Autex Account Manager or visit our website.

Cube™ is a trademark of Autex Industries Limited and Autex Pty. Cube™ is proudly manufactured in New Zealand by Autex Industries Ltd and in Australia by Autex Pty Ltd.