



Redefine your environment with Quietspace® Lattice; a premium range of suspended acoustic absorbing baffles constructed from Autex Cube™. Artistically designed with functionality in mind; Lattice is ideal for reducing reverberated noise and controlling the echo of background chatter.

Constructed from Autex Cube™; Lattice is made from 100% polyester and manufactured in New Zealand under Autex's ISO 14001 accredited Environmental Management System. Containing a minimum of 65% post-consumer recycled material, Quietspace® Lattice is the obvious choice for sustainable acoustic control.

Quietspace® Lattice is a non-toxic, non-allergenic and a non-irritable product making it ideal for environments where health and safety is key including hospitality, offices and the education sector.

Key Benefits

- Premium sound absorption and balanced acoustic performance
- Highly durable providing long term stability and performance
- Light weight and easy to install
- Available in a range of colours and designs
- Made in New Zealand
- Manufactured using a minimum of 65% post-consumer recycled material
- Made from 100% polyester fibres without chemical binders and certified low VOC
- Safe, non-toxic, non-allergenic and non-irritable
- Manufactured under ISO 9001 and ISO 14001 Quality and Environmental Management Systems
- Does not contain any Red List chemicals *

Applications

- Decorative and functional acoustic absorption system for office, education, retail, hospitality and commercial interiors
- Minimise noise in the interior environment and create a unique aesthetic

Specification:

Suspended acoustic absorption system shall be Quietspace® Lattice Torus from thermally bonded polyester containing not less than 65% post-consumer recycled material as manufactured by Autex www.autexindustries.com

Suspended acoustic absorber 1450 x 1450 x 293mm (nom. depth), colour [], sound absorption Class A, NRC 1.00 – if direct fixed to ceiling: Class A, NRC 1.15. Fire rating ISO 9705: Classification: Group 1-S, AS ISO 9705 – 2003 Classification: Group 1, EN13501-1:2007+A1:2009: B - s2, d2

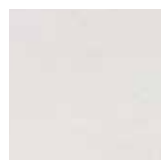
Lattice to be supplied unassembled with 8 x 1m stainless braided wire, 8 x axis ceiling connectors, 16 x wire crimps. Install as per Autex Quietspace® Lattice Torus Install Instructions.

Design Options

Quietspace® Lattice is also available in the following designs: Lattice Eclipse and Lattice Torus.

Ask your Autex Account Manager for more information on the current Lattice design options.

Colour Options



SAVOYE



OPERA



ACROS



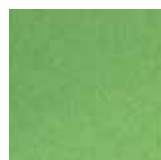
FALLING WATER



PINNACLE



SENADO



BOSCO



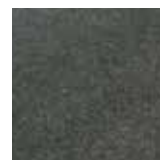
ZENITH



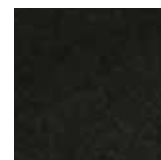
IRONBANK



FLATIRON



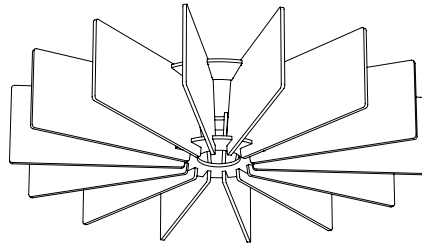
EMPIRE



PETRONAS

* Green Building Rating Compatibility certificate can be found on www.envirospec.co.nz or from your Autex Account Manager

Product Specifications



Product Name	Quietspace® Lattice
Style	Torus
Composition	100% Polyester Fibre (PET)
Radius	725mm
Diameter	1450mm
Height	293mm at highest point
Pack Contents:	2 x Quietspace® Lattice

Installation Fittings

All components for assembly and standard installation supplied, see Install Instructions for details.

Fastness to Light

Quietspace® Lattice is suitable for indoor use only.

Fire Ratings (Conducted on 12mm Cube™)

ISO 9705: 1993

Classification: Group 1-S

Smoke Production Rate: <5.0m²/s

As required by NZBC C/VM2

AS ISO 9705 - 2003

Classification: Group 1

(SMOGRARC): <100m²/s²

As required by BCA C 1.10

Fl 4974 dated 16th September, 2012

EN13501-1:2007+A1:2009

B - s2, d2

WF 336911 dated 25th February, 2014

VOC Emissions

Autex polyester has been tested by Cetec Pty Ltd (Report: CV080408) for chemical emission and is classified as low VOC.

VOC concentration: 0.01 mg/m³.

Pattern Repeat

Non-woven. No pattern repeat but product has directional grain. Product may vary from samples and batch to batch due to fibre blending and lay-up which is an inherent feature of this product.

Fabric Care

Blot spills from fabric quickly. Wipe with a damp cloth. Avoid rubbing and excessive amounts of water as this will affect the. Use carpet or upholstery shampoo as directed. Blot with a clean dry cloth after each application of solution.

Acoustic Performance

Quietspace® Lattice is specifically designed to reduce and control reverberated (echo) noise in building interiors.

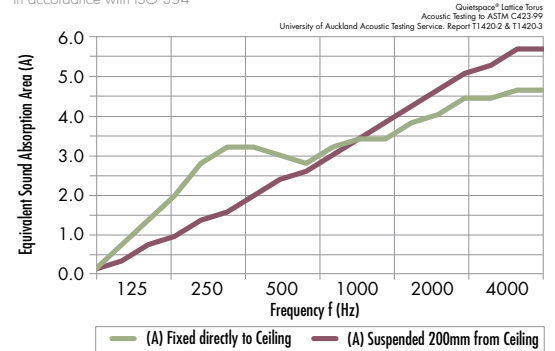
Noise Reduction Coefficient (NRC)

Direct Fix to Ceiling 1.15

Suspended 200mm from Ceiling 1.00

Effective Absorption Area Per Pair (m² Sabine)

In accordance with ISO 354



Frequency (Hz)	125	250	500	1000	2000	4000
Direct Fix to Ceiling	1.0	2.9	3.2	3.5	4.3	4.7
200mm from Ceiling	0.7	1.5	2.5	3.6	4.8	5.7

Moisture Absorption

Polyester fibre when exposed to an atmosphere of 50°C at 90% relative humidity for four days showed moisture absorption of less than 0.03% by weight. Polyester is not affected by moisture, mould or mildew and will not rot or deteriorate in intended use situations.

Environmental

Autex is committed to best practice through our ISO 9001 and ISO 14001 accredited Quality and Environmental Management Systems.

Cube™ products contains a minimum of 65% previously recycled polyester fibre (PET bottle-flake) ensuring comparatively low embodied energy. Off-cuts and manufacturing waste is re-used or recycled wherever possible.

Cube™ is manufactured from 100% polyester fibres and does not contain formaldehyde binders. Autex polyester fibres support safer indoor air quality and will not become a potential airborne pollutant.

Service

For further information about Cube™ or any other Autex product, please contact your Autex Account Manager or visit our website.

Cube™ is a trademark of Autex Industries Limited and Autex Pty. Cube™ is proudly manufactured in New Zealand by Autex Industries Ltd and in Australia by Autex Pty Ltd.