



White (9003) with Inclined Frame and Grey (7004) fascias

PANDORA is an exciting new solution from Elsafe for providing power and USB charging in meeting areas. Fitting neatly into an industry standard 5" (127mm) grommet hole with a near flush profile when closed, PANDORA rotates open to provide 360° socket access.

Great looks, simple installation and a choice of international socket options plus of course our class leading 5A TUF, makes PANDORA perfectly suited to meeting tables, informal break out areas, and use in cafés and hotels.

PANDORA is moulded in either white (9003) or black PC/ABS for both excellent durability and appearance. As an alternative to the standard textured finish, the clean profile of PANDORA when not in use can be enhanced by optional brushed stainless steel inlays.



#### USPs

- Rotates to open/close
- TUF5A option
- 360° socket access
- Optional decorative inlays
- Standard 5" grommet fit

All Black with Inlay Frame, including optional Stainless Steel Trim

# technical

## Common Modular Components\*



### Quality and testing

All PANDORA units are 100% tested before dispatch.

- Visual: Configuration and appearance.
- Mechanical: correct operation of rotating mechanism.
- Power sockets: Continuity, polarity, insulation & earth
- USB charger: Output voltage and resistance

## Features

### Configuration

PANDORA's three socket apertures can be configured with any combination of AC power sockets from the Elsafe's 42mm international range and the class leading TUF5A USB charger. PANDORA is not designed to be fitted with data and AV cables.

### Construction

Body and grommet moulded in fire retardant PC/ABS. Nylon securing nut.

### Colour

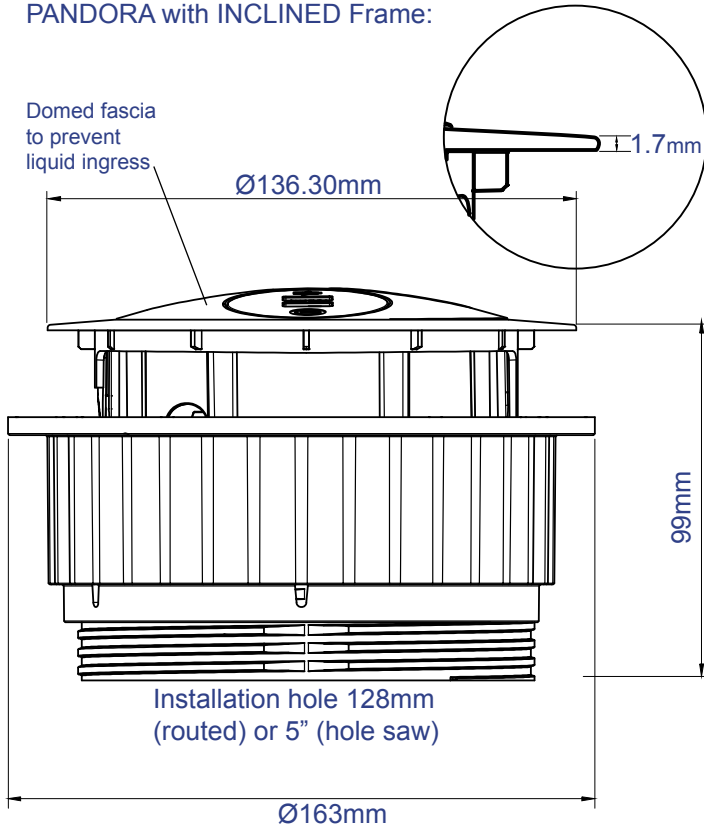
White (9003) body with grey socket fascias, and optional colour inlays, or Black body with black socket fascias, and optional brushed stainless steel inlays

### Power-cord options:

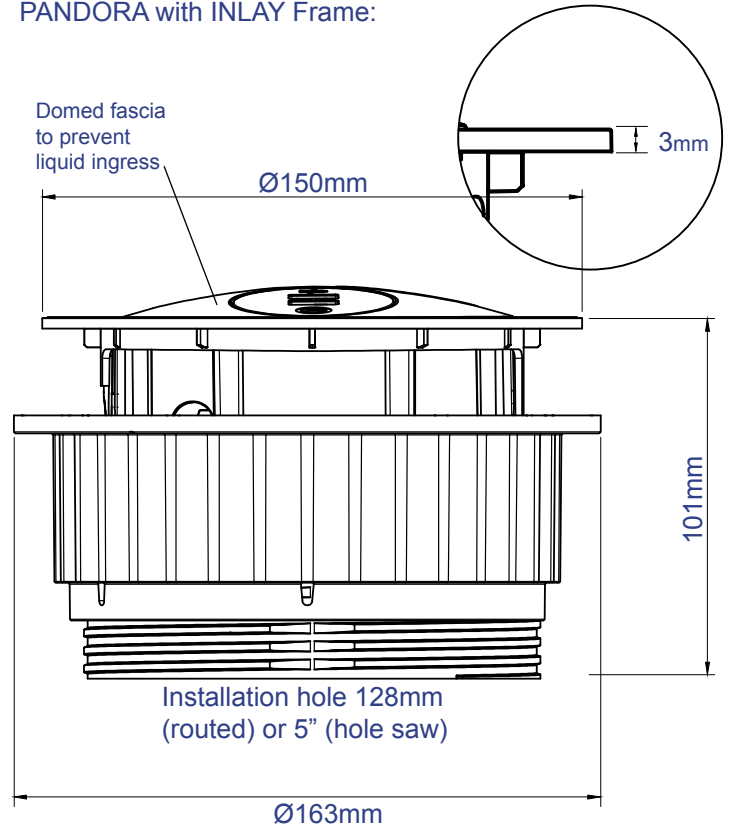
The PANDORA power cord may be hard-wired to a Wieland GST18 male connector, the appropriate mains AC plug for the socket type fitted, or a J Coupler for connecting two or more PANDORA units to a single mains supply socket.

## Unit Dimensions

PANDORA with INCLINED Frame:



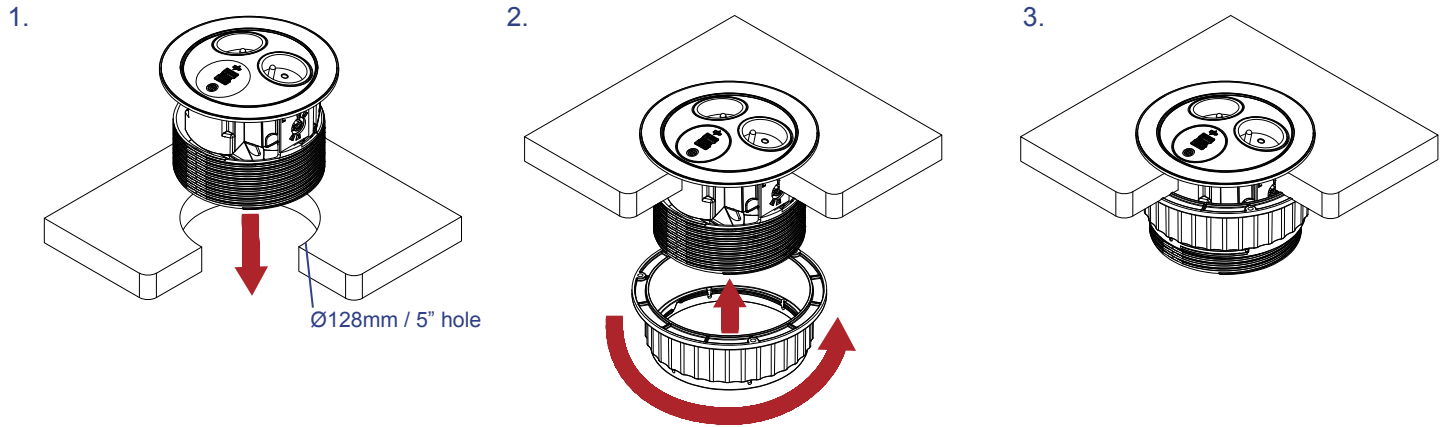
PANDORA with INLAY Frame:



# technical

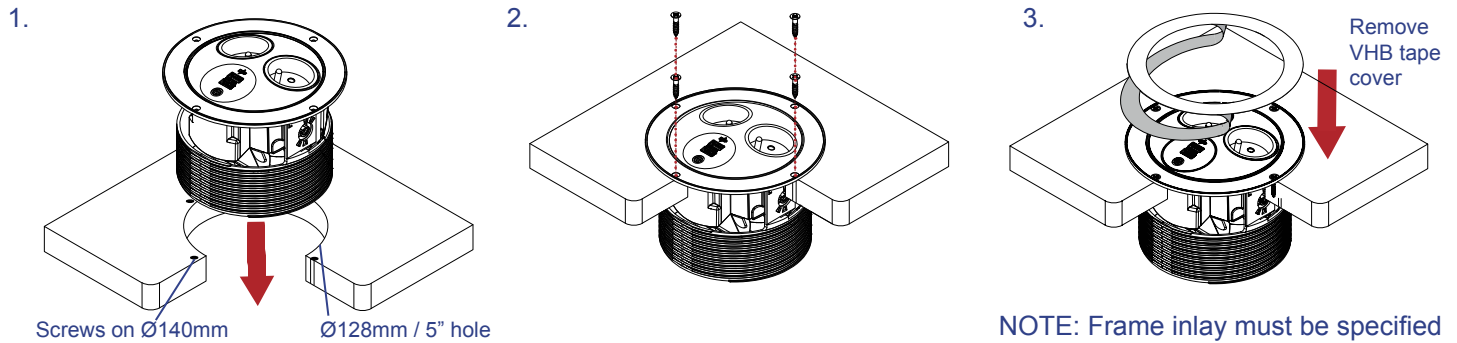
## CLAMP FIX (Inlay/Inclined frame)

Rear access required



## SCREW FIX (Inlay frame only)

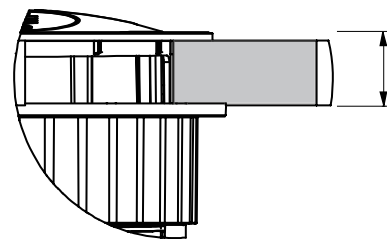
Rear access not required



NOTE: Frame inlay must be specified as required separately with order.

PANDORA drops into a 5" (127mm) grommet hole e.g. in a table top and is then secured by tightening by hand the moulded securing nut. No tools are needed once the grommet hole is cut, but access below/behind the fixing surface is required. Alternatively a PANDORA with the inlay type grommet can be fixed to a surface via four screws without rear access being needed. The inlays will then cover the screw heads.

For both fitting methods it is recommended that the cable to the rear of the panel, next to PANDORA's hinge, is secured using the accompanying Cable Cleat, to prevent drag on the hinge mechanism.



Both INCLINED and INLAY PANDORA are suitable for surfaces up to 42mm thick