





Augustus

Collection(s)	Augustus
Colour(s)	Aegean, Amazon, Armour, Birch, Blush, Candy, Chili, Copper, Dew, Earth, Ebony, Ecru, Eggplant, Flint, Fuchsia, Fudge, Glacier, Grey, Gunmetal, Ink, Ladybird, Lagoon, Lime, Linen, Madder, Marmalade, Marshmallow, Meadow, Midnight, Mustard, Ocean, Olive, Pacific, Pimpernel, Plum, Porcelain, Pumice, Reef, Russet, Seaglass, Sunshine, Thistle, Turmeric, Tuscany, Willow, Wolf, Zinc
Product Type(s)	Drapery / Heavy Commercial
Attributes	Encore Recycled
Composition	70% Recycled Wool 25% Polyamide 5% Acrylic
Pattern Match	No
Pattern Repeat (cm)	Plain
Railroaded	Plain Fabrics marked Railroaded 'Plain' can be cut in either direction at the discretion of the manufacturer, and in consultation with the customer's preference. Fabric is sampled in the direction it comes up the roll (Non Railroaded).
Continuous	No
Self-Weighted	No
Width (cm)	150
Roll Size (approx)	50m
Weight (gsm)	392
Origin	European
Stain Repellent	No
FIAA Care Label	FIAA Care Label 3 - Non Pile Fabrics
WCAA Care Label	WCAA Care Label 2
Usage	 Upholstery  Draperies  Cushion  Lamp Shade Not suitable for roman blinds
Guarantee	3 Years in accordance with our product type and care instructions

Test Results

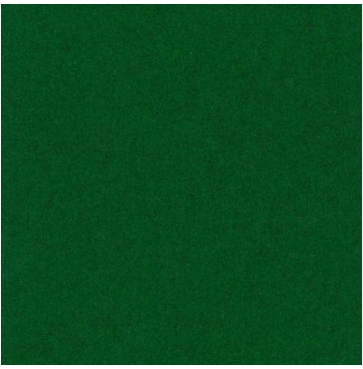
Martindale (ISO 12947, 12kPA)	150,000 Cycles
Seam Slippage (mm) (ISO 13936-2, Load 180)	Warp 3.3, Weft 2.9
Pilling Resistance (ISO 12945-2)	4/5
Colourfastness to Light Xenon arc (ISO 105-B02, blue std 6)	>6
Colourfastness to Rubbing (ISO 105-X12)	Dry 5, Wet 4/5
Dimension Change - Laundering (%) (ISO 5077/ISO 6330.7BA)	Warp -1.4, Weft -4.8
Dimension Change - Hanging (%) (AS2663.1.B)	Warp 0.2, Weft 0.1
Free and Hydrolysed Formaldehyde (ISO 14184-1:1998)	Not Detectable
Flammability AS/NZS 1530.2 - 1993 Flammability Index (0-100) Spread Factor (0-40) Heat Factor (0 upward)	34 Length 24, Width 21 Length 10, Width 8
Flammability AS/NZS 1530.3 - 1999 Ignitability (0-20) Spread of Flame (0-10) Heat Involved (0-10) Smoke Developed (0-10)	7 0 0 3
Group Number AS5637.1	2



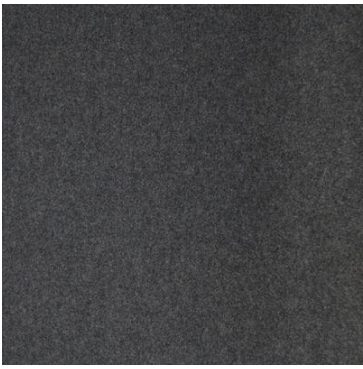
Augustus



Aegean



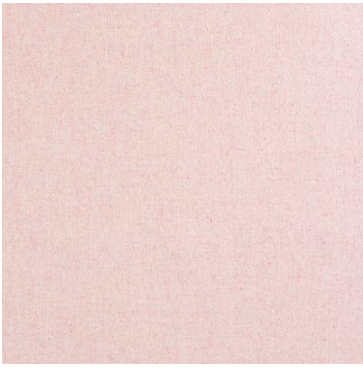
Amazon



Armour



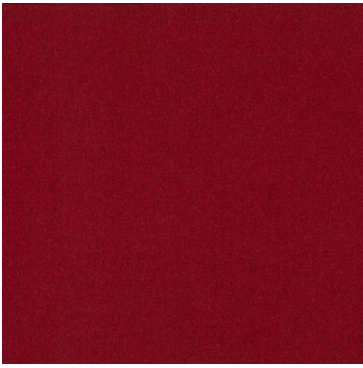
Birch



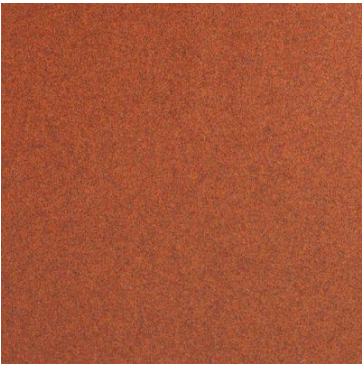
Blush



Candy



Chili



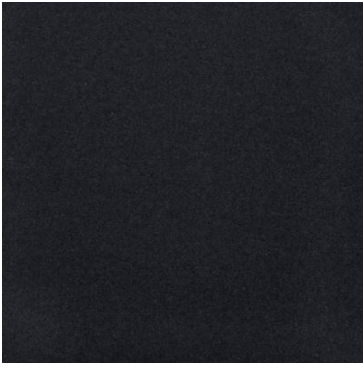
Copper



Dew



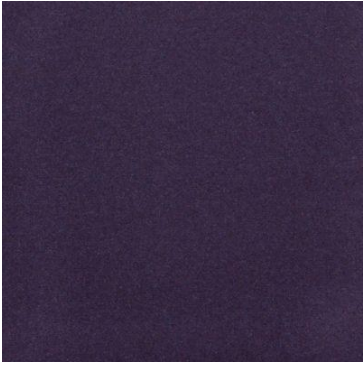
Earth



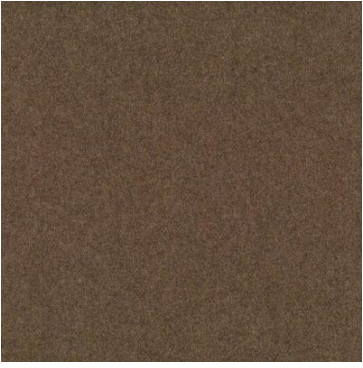
Ebony



Ecru



Eggplant



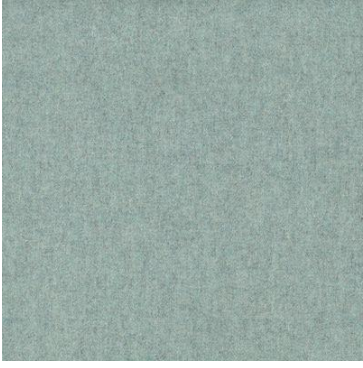
Flint



Fuchsia



Fudge



Glacier



Grey



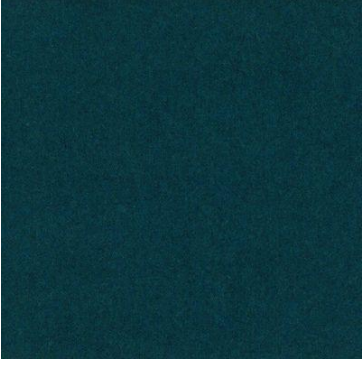
Gunmetal



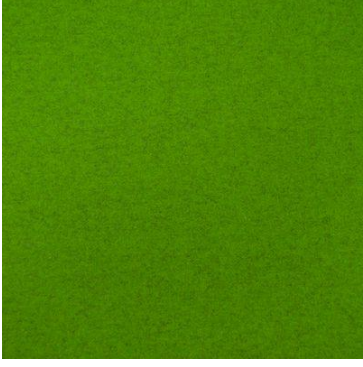
Ink



Ladybird



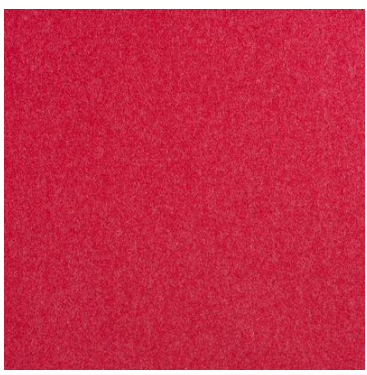
Lagoon



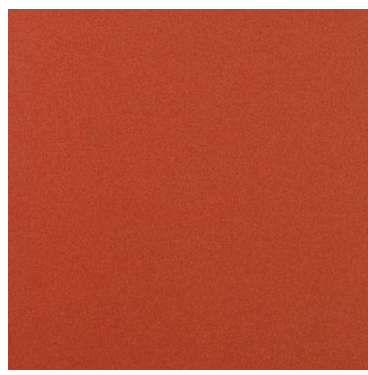
Lime



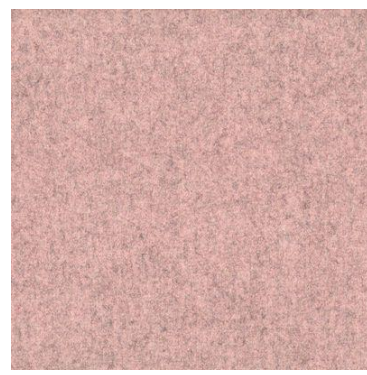
Linen



Madder



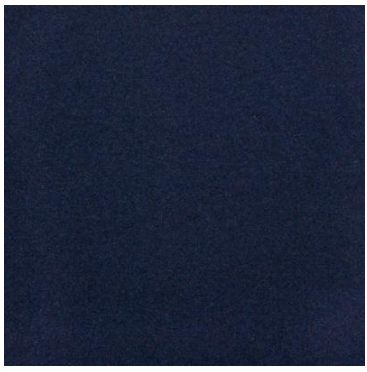
Marmalade



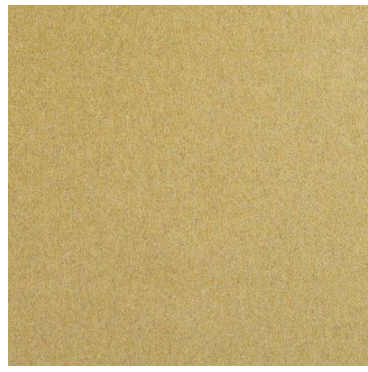
Marshmallow



Meadow



Midnight



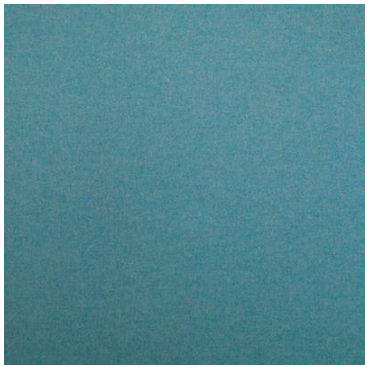
Mustard



Ocean



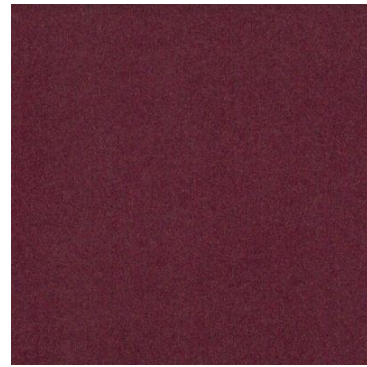
Olive



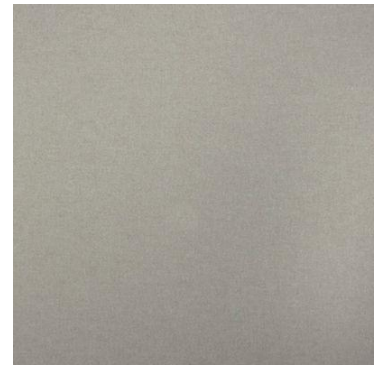
Pacific



Pimpernel



Plum



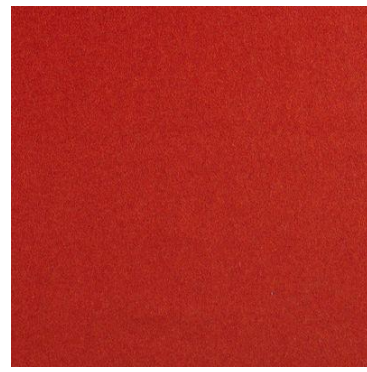
Porcelain



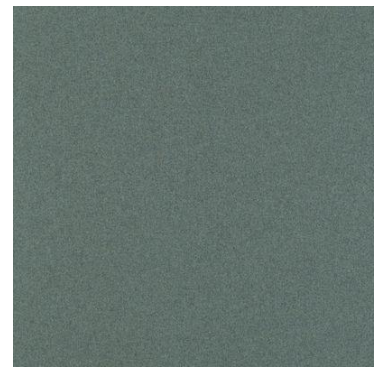
Pumice



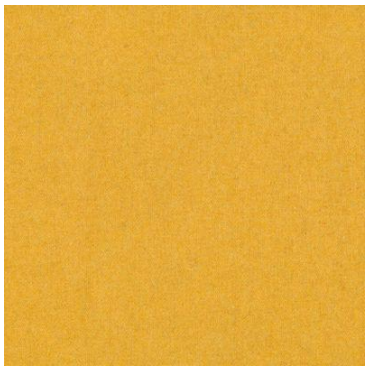
Reef



Russet



Seaglass



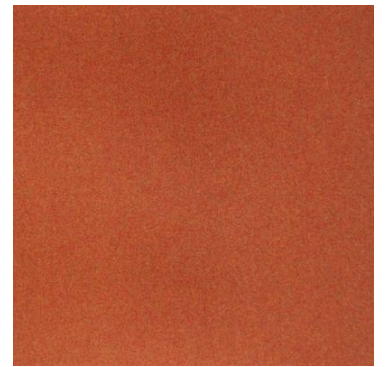
Sunshine



Thistle



Turmeric



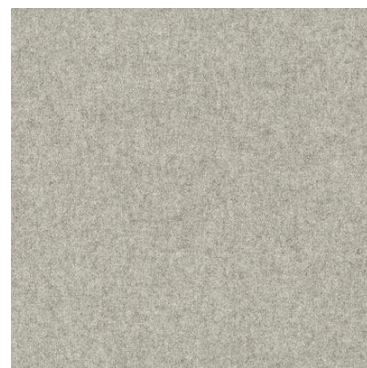
Tuscany



Willow



Wolf



Zinc